

AN INITIAL ECONOMIC SNAPSHOT OF EAST DUNBARTONSHIRE

Economic Development Strategy

The Council is asking residents, businesses and organisations to help guide a new Economic Development Strategy for East Dunbartonshire. This infographic contains key facts and figures to provide background (drawn from various official sources, 2022-24) – visit www.eastdunbarton.gov.uk/EDS



SOCIAL

Population

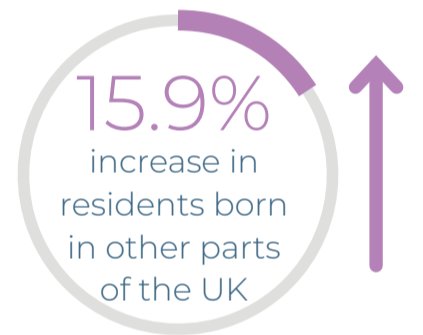
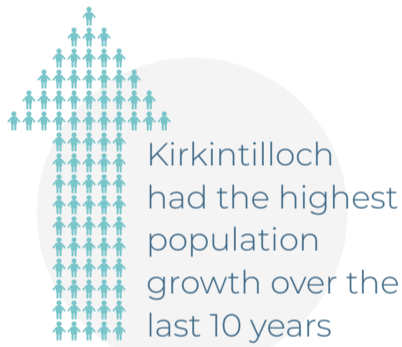


24.3% of residents aged 65 and older

Above the GCR average of 18.1%



Population concentrated mainly in **Milngavie, Bearsden, Bishopbriggs & Auchinairn**, and **Kirkintilloch & Lenzie**



Poverty

East Dunbartonshire is the second most prosperous area in the GCR area



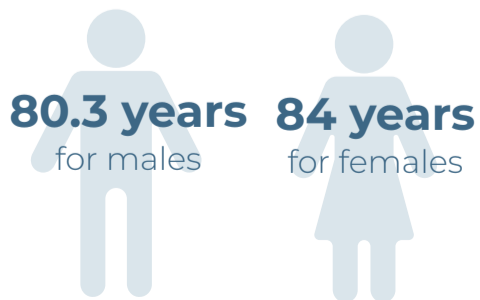
Areas of deprivation include **Hillhead, Lennoxton, and Kirkintilloch West** (lower rankings in income, employment and health)

£28,478 annual gross pay for the lowest 40th percentile



Health

Life expectancy



(higher than both GCR and Scottish averages)

Inequalities in life expectancy between the most and least deprived populations – gap of **9.2 years for males** and **9.1 years for females**

Increase in the proportion of people with long-term limiting condition/illness in recent years

ECONOMY

Employment



26,000 local jobs

Largest employment sectors include

Wholesale & Retail



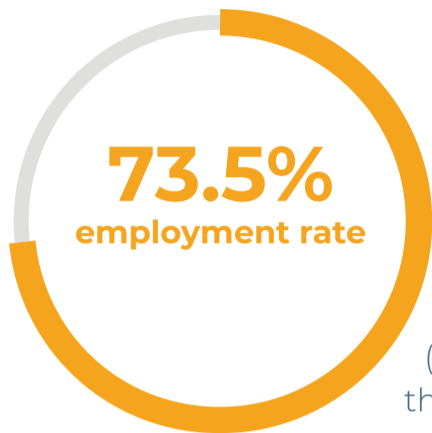
Education



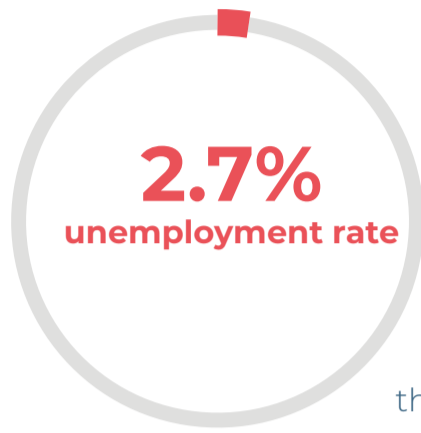
Human Health & Social Work



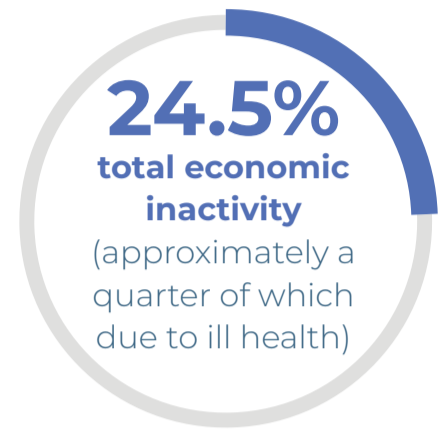
Lower proportion of jobs in knowledge-intensive and support activities, as well as manufacturing and construction



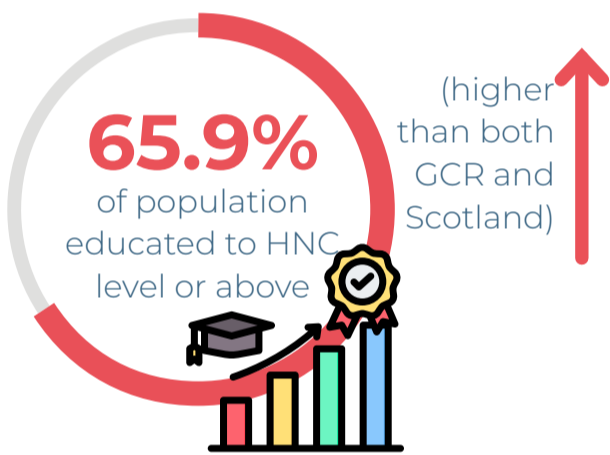
(higher than GCR)



(lower than GCR)



Skills



(higher than both GCR and Scotland)



2,780

businesses – vast majority are Small and Medium Enterprises (SMEs)

Business

Enterprise rate – number of businesses per 10,000 working-age people –

439.3

(higher than GCR – 404.3)



1%



of businesses are Living Wage-accredited – mainly small or micro businesses

Productivity

£1.605 billion

Gross Valued Added – value of all goods and services produced locally, after deducting the cost of inputs and raw materials – up 11.8% from 2021

£35.1

GVA per hour worked – up 7.7% from 2020

Sectors with highest output

Wholesale & Retail



Education

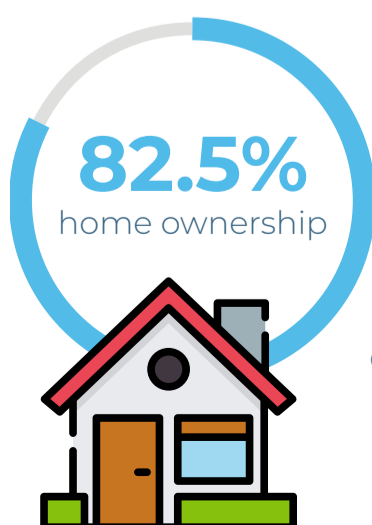


Human Health & Social Work



PLACE

Housing



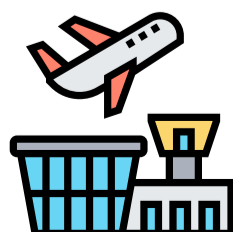
(significantly higher than GCR average of 60.5%)



Home ownership notably low among those aged 16 to 34



Highest average rent for 1-4 bedroom in GCR



Public Transport

All key centres of economic activity have inadequate connections to innovation districts, particularly to Glasgow Airport and the Advanced Manufacturing Innovation District Scotland